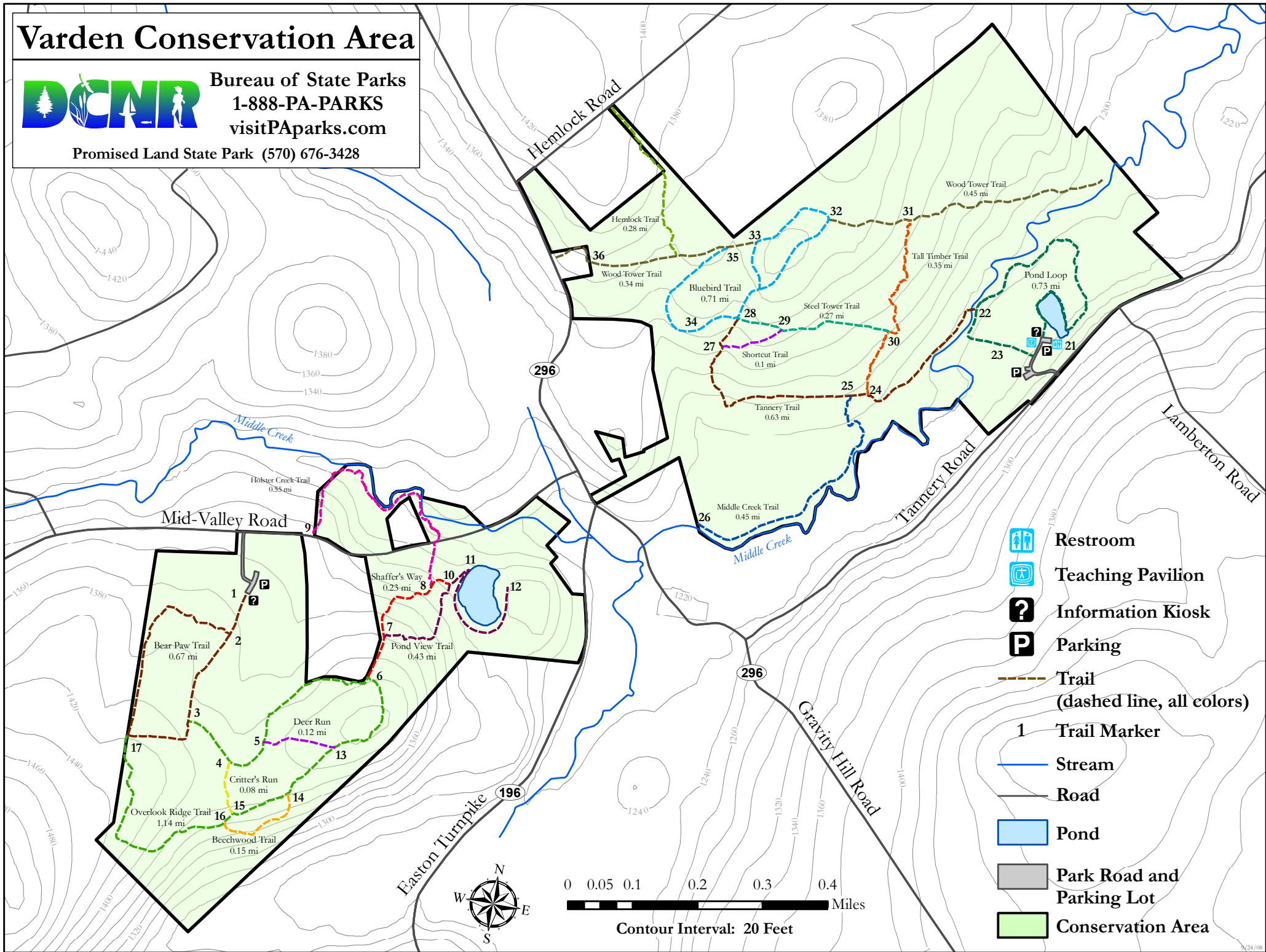


Varden Conservation Area

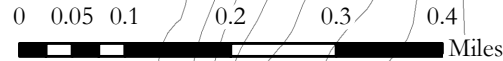


Bureau of State Parks
1-888-PA-PARKS
visitPAparks.com

Promised Land State Park (570) 676-3428



- Restroom
- Teaching Pavilion
- Information Kiosk
- Parking
- Trail (dashed line, all colors)
- 1 Trail Marker
- Stream
- Road
- Pond
- Park Road and Parking Lot
- Conservation Area



Contour Interval: 20 Feet

